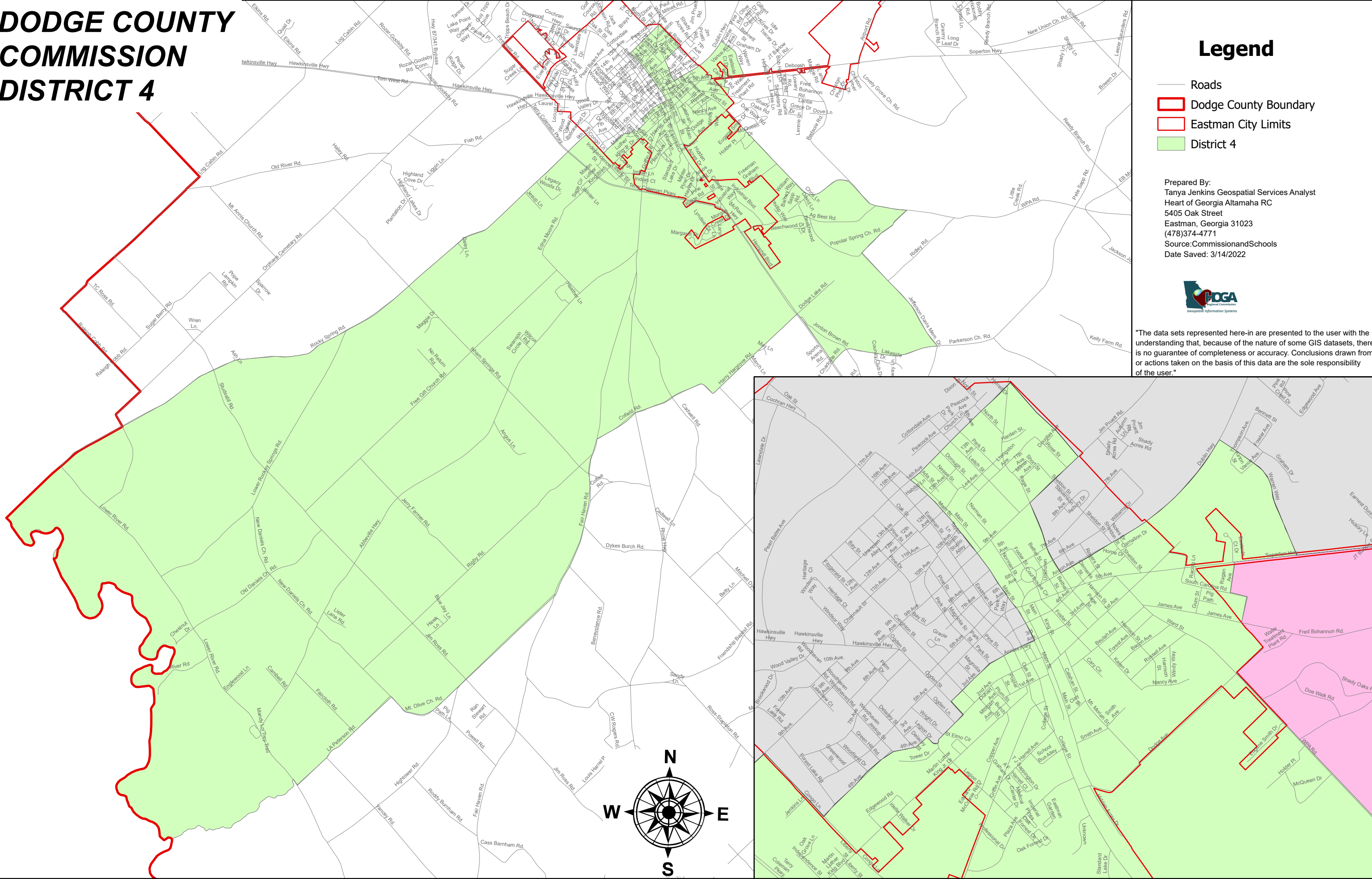



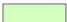


DODGE COUNTY COMMISSION DISTRICT 4



Legend

-  Roads
-  Dodge County Boundary
-  Eastman City Limits
-  District 4

Prepared By:
Tanya Jenkins Geospatial Services Analyst
Heart of Georgia Altamaha RC
5405 Oak Street
Eastman, Georgia 31023
(478)374-4771
Source:CommissionandSchools
Date Saved: 3/14/2022



"The data sets represented here-in are presented to the user with the understanding that, because of the nature of some GIS datasets, there is no guarantee of completeness or accuracy. Conclusions drawn from, or actions taken on the basis of this data are the sole responsibility of the user."